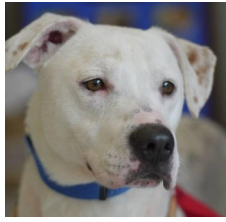
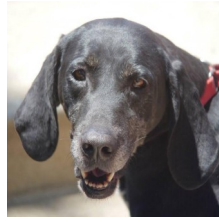


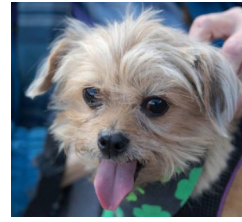
Jake



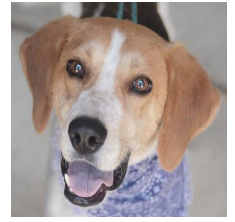
Mickey



Jennifer



Brownie



Dixon



Ella

Mutt Love Rescue ("Mutts")

Putting a Face* on Your Generosity
(* just a few of many)



Gem

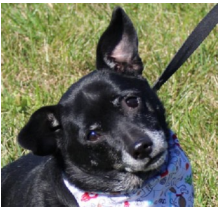


Sparky

You can be sure that your gift will be used for the purpose you intended. Virtually all of the funds you give go directly to the medical care and temporary housing of the dogs in our care. We pay no salaries; even our legal and accounting services are donated. *Mutts* receives deep discounts from our wonderful partnering veterinarians, boarding kennels, and feed stores. We are committed, as we know you would wish, to helping as many dogs as possible with available funds. Funding from your workplace giving campaigns is our lifeblood. The odds that the dogs pictured here would be alive today without such support are very slim. **With your help, we together can save so many more lives.**



Lucy



Dougie

Mutts helps the dogs most in need, not only the readily adoptable, but also the injured, sick, and older guys, mothers as well as pups -- dogs many other rescues pass by. *Mutts'* dedicated and experienced volunteers and fosters take great joy in watching and helping our dogs thrive.



Buster

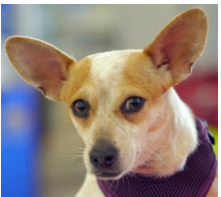


Seymour

Please visit our website, <http://muttloverescue.org>, to meet all of our dogs and to learn more about our group. **And, please, join us in our essential work by designating Mutt Love Rescue "Mutts" as a beneficiary of your United Way, Combined Federal Campaign, or Combined Virginia Campaign workplace contribution.** Thank you!



Chief

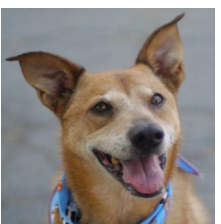


Andy

If participation in UW/CFC/CVC is not available to you, Mutts will gratefully accept your donation by Pay Pal or personal check made payable to Mutt Love Rescue, PO Box 1005, Fairfax, VA 22038. It would be a great help to our pups if you would also print and post the attached flyer far and wide!



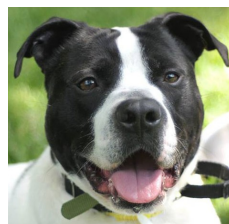
Daisy



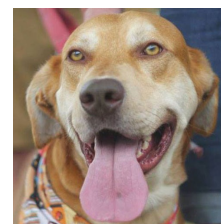
TJ



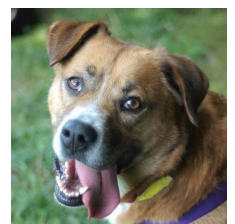
Koda



Biggs



Tazzy



Jelly Bean